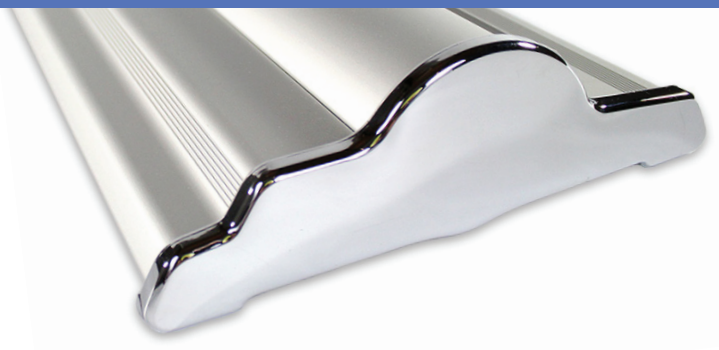


SILVERSTEP® RETRACTABLE BANNER STAND 24"

RETRACTABLE BANNER STANDS
PRODUCT CODE: SS24



On frame On graphic



PRODUCT DESCRIPTION

Durable and uniquely designed, this aluminum stand is the perfect combination of versatility, appeal, and affordability.

DISPLAY DIMENSION	25.5" W x 9.5" D x 3" H
GRAPHIC DIMENSIONS	24" W x 85" to 92" H

GRAPHIC MATERIAL

Super Flat Vinyl or Fabric

GRAPHIC FINISHING

5" Bleed at the bottom

DISPLAY CONSTRUCTION

Sturdy Aluminum Construction

SHIPPING WEIGHTS & DIMENSIONS

SINGLE BOX - 1 Unit

Shipping Weight	12 lbs (stand only) 13 lbs (frame and graphic)
Shipping Dimensions	31" H x 13" W x 6" D

MASTER BOX - 4 Units

Shipping Weight	51 lbs (stand only) 52 lbs (frame and graphic)
Shipping Dimensions	30" H x 27" W x 12" D

LARGE QUANTITY FREIGHT

Master Box - Freight Shipping	12 boxes per 48" L x 40" W x 42" H skids
Master Box - Freight Weight	153 lbs (frame only) 156 lbs (frame & graphic)

GRAPHIC TURN AROUND TIME

2 to 3 business days after proof approval

AVAILABLE ACCESSORIES

Silver Clamp Light (35 Watts)	Silver Clamp Light LED
Silver Light (50 Watts)	Black Light (50 Watts)
Silverstep Magnetic Connector	

AVAILABILITY CA and PA



Black Base
(Optional)



Black Clamp Bar
(Optional for Super Flat Vinyl)



Silverstep Magnetic Connector
(Optional)



Black Hook & Loop Bar
(Optional for Fabric)



Silver Hook & Loop Bar
(Optional for Fabric)



PARTS LIST



Qty 1 - Silverstep Stand



Qty 1 - Clamp Bar



Qty 1 - Telescopic Support Pole



Qty 1 - Silver Travel Bag

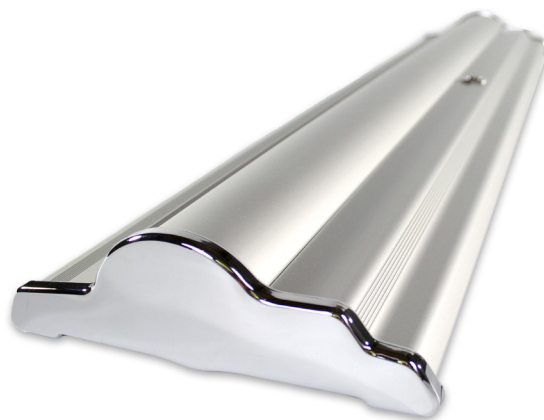
SILVERSTEP® RETRACTABLE BANNER STAND 24"

RETRACTABLE BANNER STANDS

PRODUCT CODE: SS24

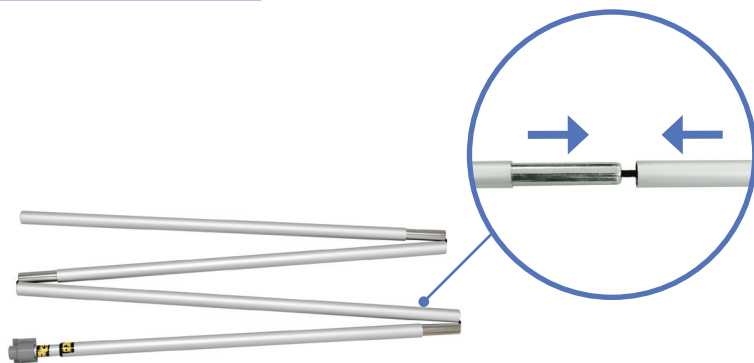
SET UP INSTRUCTIONS

Prepare Banner Stand

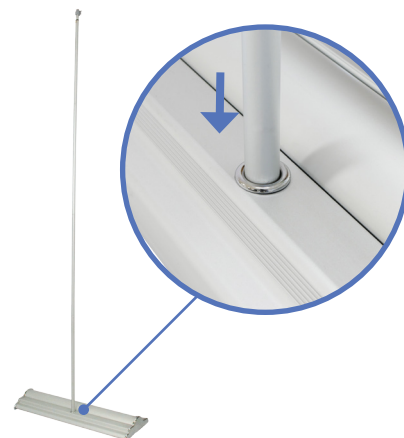


a. Remove Silverstep Stand out of bag.

Install Telescopic Pole

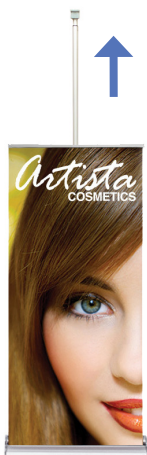


a. Assemble telescopic pole.



b. Insert telescopic pole into hole of the base stand.

Pull Up Banner



a. Pull banner out of base.



b. Attach telescopic pole to the clamp bar. Adjust pole to desired height.



c. Complete stand.

SILVERSTEP® RETRACTABLE BANNER STAND 24"

RETRACTABLE BANNER STANDS

PRODUCT CODE: SS24

SET UP INSTRUCTIONS

Install Magnetic Connector



a. Pull off end caps from Silverstep.



b. Push connector piece until it locks in position.



c. Connect another Silverstep onto it.

Complete Connection



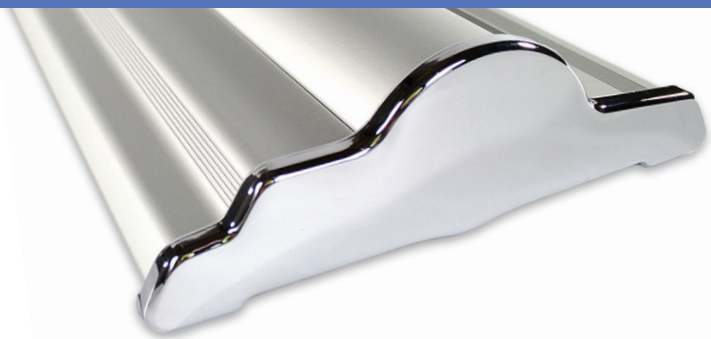
SILVERSTEP® TABLETOP 24"

RETRACTABLE BANNER STANDS

PRODUCT CODE: SSTT24



On frame On graphic



PRODUCT DESCRIPTION

Durable and uniquely designed, this aluminum stand is the perfect combination of versatility, appeal, and affordability.

DISPLAY DIMENSION	25.5" W x 9.5" D x 3" H
GRAPHIC DIMENSIONS	24" W x 85" to 92" H

GRAPHIC MATERIAL

Super Flat Vinyl or Fabric

GRAPHIC FINISHING

5" Bleed at the bottom

DISPLAY CONSTRUCTION

Sturdy Aluminum Construction

SHIPPING WEIGHTS & DIMENSIONS

SINGLE BOX - 1 Unit

Shipping Weight	12 lbs (stand only) 13 lbs (frame and graphic)
Shipping Dimensions	31" H x 13" W x 6" D

MASTER BOX - 4 Units

Shipping Weight	51 lbs (stand only) 52 lbs (frame and graphic)
Shipping Dimensions	30" H x 27" W x 12" D

LARGE QUANTITY FREIGHT

Master Box - Freight Shipping	12 boxes per 48" L x 40" W x 42" H skids
Master Box - Freight Weight	153 lbs (frame only) 156 lbs (frame & graphic)

GRAPHIC TURN AROUND TIME

2 to 3 business days after proof approval

AVAILABLE ACCESSORIES

Silver Clamp Light (35 Watts)	Silver Clamp Light LED
Silver Light (50 Watts)	Black Light (50 Watts)
Silverstep Magnetic Connector	

AVAILABILITY CA and PA



Black Base
(Optional)



Black Clamp Bar
(Optional for Super Flat Vinyl)



Silverstep Magnetic Connector
(Optional)



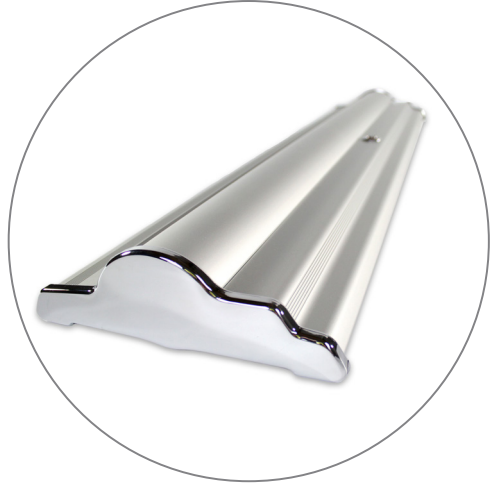
Black Hook & Loop Bar
(Optional for Fabric)



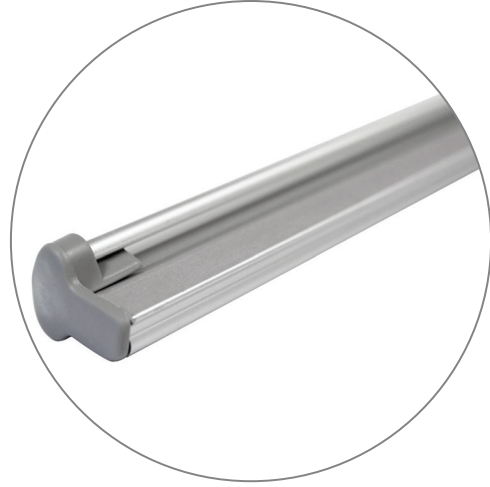
Silver Hook & Loop Bar
(Optional for Fabric)



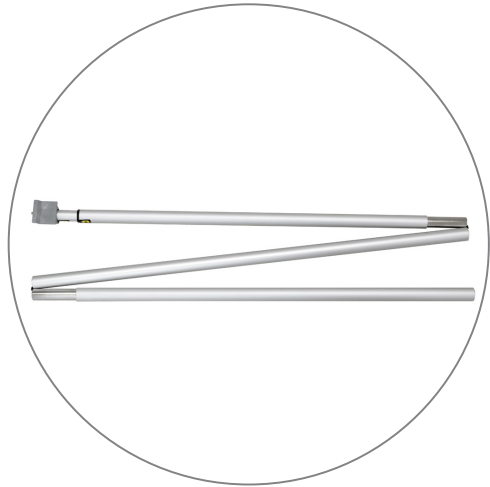
PARTS LIST



Qty 1 - Silverstep Stand



Qty 1 - Clamp Bar



Qty 1 - Telescopic Support Pole
(2-sectional poles for 45" & 54".
3-sectional poles for 63" & 76".)



Qty 1 - Silver Travel Bag

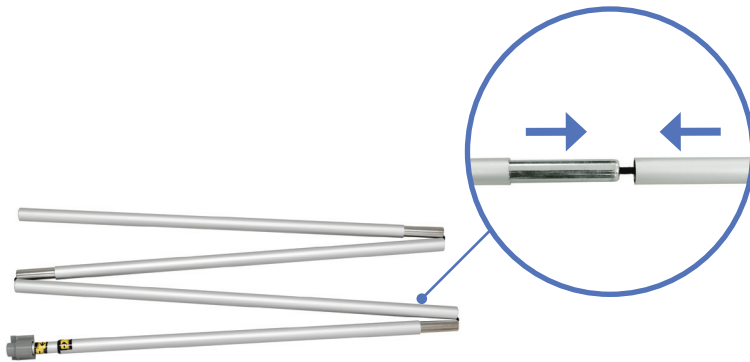
SET UP INSTRUCTIONS

Prepare Banner Stand



a. Remove Silverstep Stand out of bag.

Install Telescopic Pole

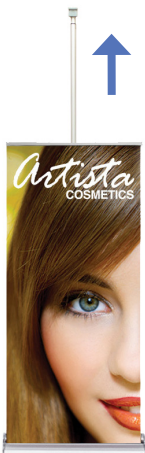


a. Assemble telescopic pole.



b. Insert telescopic pole into hole of the base stand.

Pull Up Banner



a. Pull banner out of base.



b. Attach telescopic pole to the clamp bar.
Adjust pole to desired height.



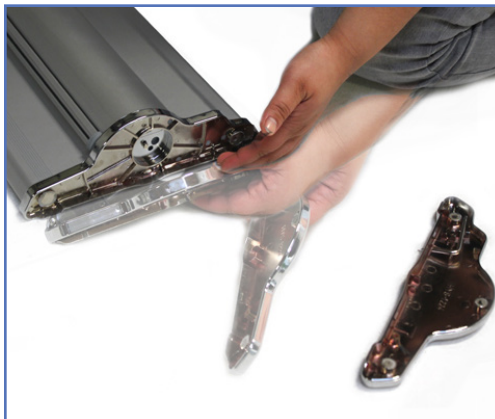
c. Complete stand.

SET UP INSTRUCTIONS

Install Magnetic Connector



a. Pull off end caps from Silverstep.



b. Push connector piece until it locks in position.



c. Connect another Silverstep onto it.

Complete Connection

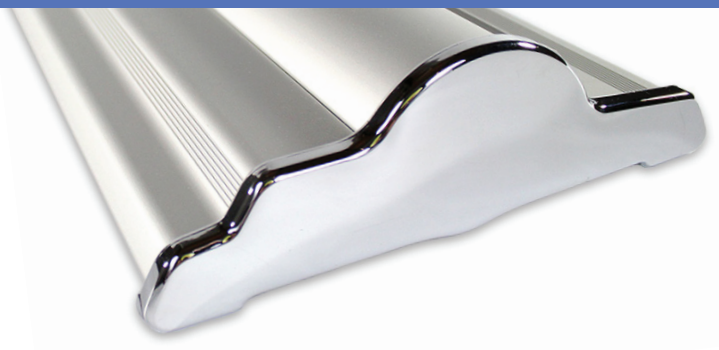


SILVERSTEP® RETRACTABLE BANNER STAND 36"

RETRACTABLE BANNER STANDS
PRODUCT CODE: SS36



On frame On graphic



PRODUCT DESCRIPTION

Durable and uniquely designed, this aluminum stand is the perfect combination of versatility, appeal, and affordability.

DISPLAY DIMENSION	37.5" W x 9.5" D x 3" H
GRAPHIC DIMENSIONS	36" W x 69" to 92" H

GRAPHIC MATERIAL

Super Flat Vinyl or Fabric

GRAPHIC FINISHING

5" Bleed at the bottom

DISPLAY CONSTRUCTION

Sturdy Aluminum Construction

SHIPPING WEIGHTS & DIMENSIONS

SINGLE BOX - 1 Unit

Shipping Weight	17 lbs (stand only) 18 lbs (frame and graphic)
Shipping Dimensions	41" H x 13" W x 5" D

MASTER BOX - 4 Units

Shipping Weight	64 lbs (stand only) 65 lbs (frame and graphic)
Shipping Dimensions	42" H x 26" W x 10" D

LARGE QUANTITY FREIGHT

Master Box - Freight Shipping	12 boxes per 48" L x 40" W x 52" H skids
Master Box - Freight Weight	384 lbs (frame only) 390 lbs (frame & graphic)

GRAPHIC TURN AROUND TIME

2 to 3 business days after proof approval

AVAILABLE ACCESSORIES

Silver Clamp Light (35 Watts)	Silver Clamp Light LED
Silver Light (50 Watts)	Black Light (50 Watts)
Silverstep Magnetic Connector	

AVAILABILITY	CA and PA
--------------	-----------



Black Base
(Optional)



Black Clamp Bar
(Optional for Super Flat Vinyl)



Silverstep Magnetic Connector
(Optional)



Black Hook & Loop Bar
(Optional for Fabric)



Silver Hook & Loop Bar
(Optional for Fabric)



SILVERSTEP® RETRACTABLE BANNER STAND 36"

RETRACTABLE BANNER STANDS

PRODUCT CODE: SS36

PARTS LIST



Qty 1 - Silverstep Stand



Qty 1 - Clamp Bar



Qty 1 - Telescopic Support Pole



Qty 1 - Silver Travel Bag

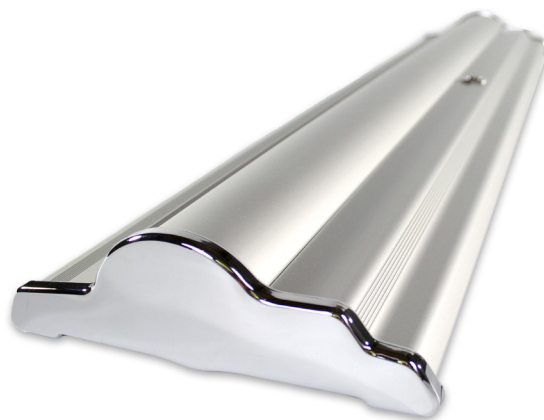
SILVERSTEP® RETRACTABLE BANNER STAND 36"

RETRACTABLE BANNER STANDS

PRODUCT CODE: SS36

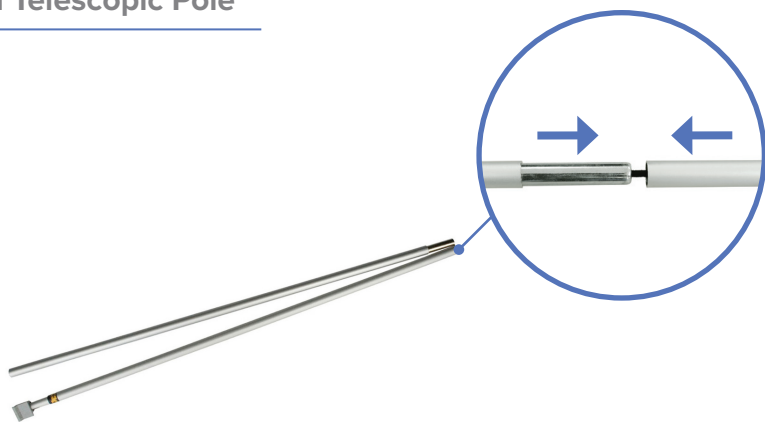
SET UP INSTRUCTIONS

Prepare Banner Stand

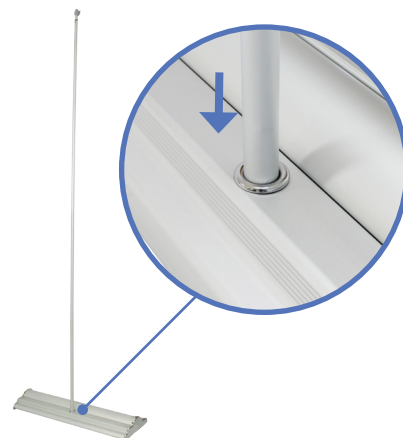


a. Remove Silverstep Stand out of bag.

Install Telescopic Pole

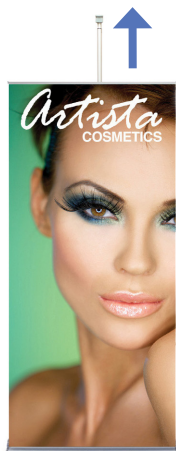


a. Assemble telescopic pole.



b. Insert telescopic pole into hole of the base stand.

Pull Up Banner



a. Pull banner out of base.



b. Attach telescopic pole to the clamp bar. Adjust pole to desired height.



c. Complete stand.

SILVERSTEP® RETRACTABLE BANNER STAND 36"

RETRACTABLE BANNER STANDS

PRODUCT CODE: SS36

SET UP INSTRUCTIONS

Install Magnetic Connector



a. Pull off end caps from Silverstep.



b. Push connector piece until it locks in position.



c. Connect another Silverstep onto it.

Complete Connection



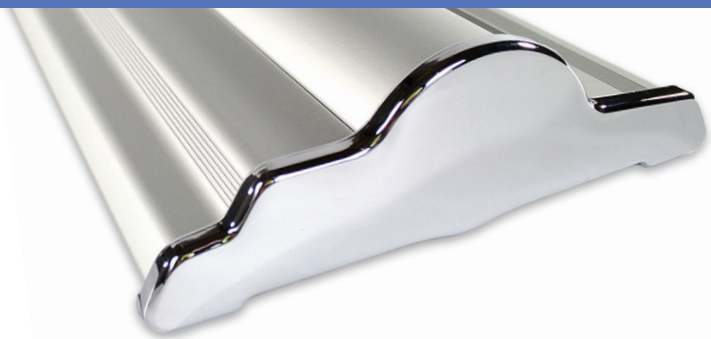
SILVERSTEP® TABLETOP 36"

RETRACTABLE BANNER STANDS

PRODUCT CODE: SSTT36



On frame On graphic



PRODUCT DESCRIPTION

Durable and uniquely designed, this aluminum stand is the perfect combination of versatility, appeal, and affordability.

DISPLAY DIMENSION	37.5" W x 9.5" D x 3" H
-------------------	-------------------------

GRAPHIC DIMENSIONS	36" W x 69" to 92" H
--------------------	----------------------

GRAPHIC MATERIAL

Super Flat Vinyl or Fabric

GRAPHIC FINISHING

5" Bleed at the bottom

DISPLAY CONSTRUCTION

Sturdy Aluminum Construction

SHIPPING WEIGHTS & DIMENSIONS

SINGLE BOX - 1 Unit

Shipping Weight	17 lbs (stand only) 18 lbs (frame and graphic)
-----------------	---

Shipping Dimensions	41" H x 13" W x 5" D
---------------------	----------------------

MASTER BOX - 4 Units

Shipping Weight	64 lbs (stand only) 65 lbs (frame and graphic)
-----------------	---

Shipping Dimensions	42" H x 26" W x 10" D
---------------------	-----------------------

LARGE QUANTITY FREIGHT

Master Box - Freight Shipping	12 boxes per 48" L x 40" W x 52" H skids
-------------------------------	--

Master Box - Freight Weight	384 lbs (frame only) 390 lbs (frame & graphic)
-----------------------------	---

GRAPHIC TURN AROUND TIME

2 to 3 business days after proof approval

AVAILABLE ACCESSORIES

Silver Clamp Light (35 Watts)	Silver Clamp Light LED
-------------------------------	------------------------

Silver Light (50 Watts)	Black Light (50 Watts)
-------------------------	------------------------

Silverstep Magnetic Connector	
-------------------------------	--

AVAILABILITY	CA and PA
--------------	-----------



Black Base (Optional)



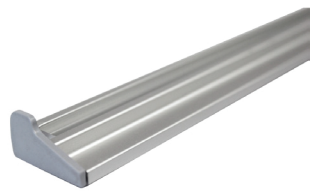
Black Clamp Bar (Optional for Super Flat Vinyl)



Silverstep Magnetic Connector (Optional)



Black Hook & Loop Bar (Optional for Fabric)

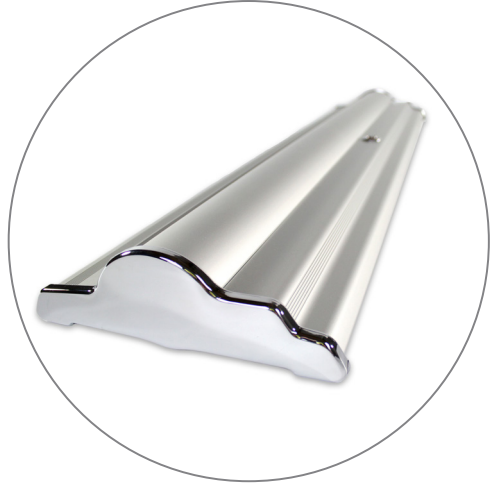


Silver Hook & Loop Bar (Optional for Fabric)

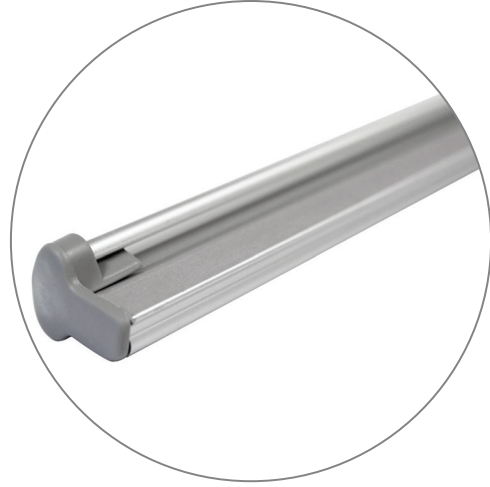


Silverstep Magnetic Connector (Optional)

PARTS LIST



Qty 1 - Silverstep Stand



Qty 1 - Clamp Bar



Qty 1 - Telescopic Support Pole



Qty 1 - Silver Travel Bag

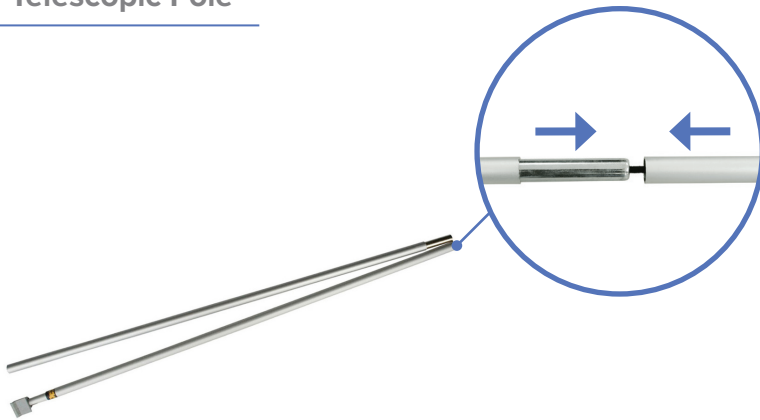
SET UP INSTRUCTIONS

Prepare Banner Stand



a. Remove Silverstep Stand out of bag.

Install Telescopic Pole

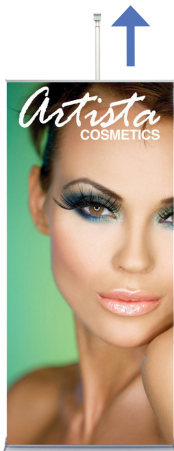


a. Assemble telescopic pole.



b. Insert telescopic pole into hole of the base stand.

Pull Up Banner



a. Pull banner out of base.



b. Attach telescopic pole to the clamp bar.
Adjust pole to desired height.



c. Complete stand.

SET UP INSTRUCTIONS

Install Magnetic Connector



a. Pull off end caps from Silverstep.



b. Push connector piece until it locks in position.



c. Connect another Silverstep onto it.

Complete Connection



SILVERSTEP® RETRACTABLE BANNER STAND 48"

RETRACTABLE BANNER STANDS

PRODUCT CODE: SS48



On frame On graphic



PRODUCT DESCRIPTION

Durable and uniquely designed, this aluminum stand is the perfect combination of versatility, appeal, and affordability.

DISPLAY DIMENSION	49.5" W x 9.5" D x 3" H
GRAPHIC DIMENSIONS	48" W x 69" to 92" H

GRAPHIC MATERIAL

Super Flat Vinyl or Fabric

GRAPHIC FINISHING

5" Bleed at the bottom

DISPLAY CONSTRUCTION

Sturdy Aluminum Construction

SHIPPING WEIGHTS & DIMENSIONS

SINGLE BOX - 1 Unit

Shipping Weight	21 lbs (stand only) 22 lbs (frame and graphic)
Shipping Dimensions	53" H x 13" W x 6" D

MASTER BOX - 4 Units

Shipping Weight	89 lbs (stand only) 90 lbs (frame and graphic)
Shipping Dimensions	53" H x 27" W x 12" D

LARGE QUANTITY FREIGHT

Master Box - Freight Shipping	9 boxes per 48" L x 40" W x 65" H skids
Master Box - Freight Weight	534 lbs (frame only) 540 lbs (frame & graphic)

GRAPHIC TURN AROUND TIME

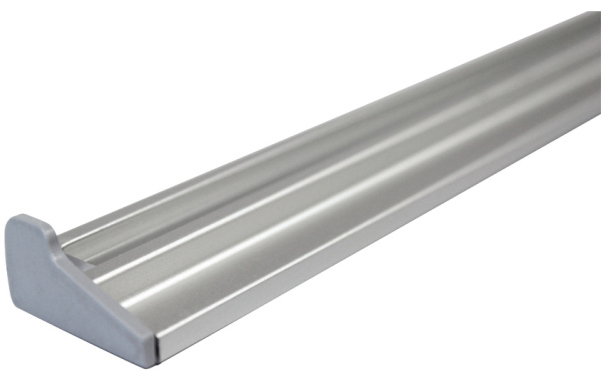
2 to 3 business days after proof approval

AVAILABLE ACCESSORIES

Silver Clamp Light (35 Watts)	Silver Clamp Light LED
Silver Light (50 Watts)	Silverstep Magnetic Connector

AVAILABILITY

CA and PA



Silver Hook & Loop Bar
(Optional for Fabric)



Silverstep Magnetic Connector
(Optional)

PARTS LIST



Qty 1 - Silverstep Stand



Qty 1 - Clamp Bar



Qty 2 - Telescopic Support Poles



Qty 1 - Silver Travel Bag

SILVERSTEP® RETRACTABLE BANNER STAND 48"

RETRACTABLE BANNER STANDS

PRODUCT CODE: SS48

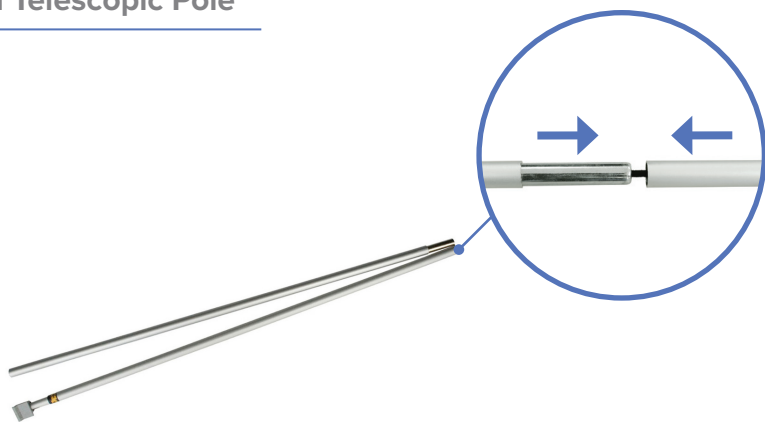
SET UP INSTRUCTIONS

Prepare Banner Stand

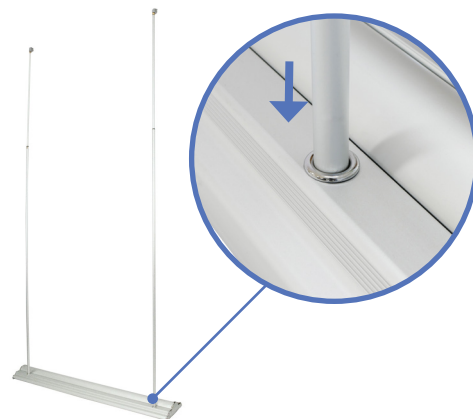


a. Remove Silverstep Stand out of bag.

Install Telescopic Pole



a. Assemble telescopic poles.



b. Insert telescopic poles into hole of the base stand.

Pull Up Banner



a. Pull banner out of base.



b. Attach telescopic poles to the clamp bar.
Adjust pole to desired height.



c. Complete stand.

SILVERSTEP® RETRACTABLE BANNER STAND 48"

RETRACTABLE BANNER STANDS

PRODUCT CODE: SS48

SET UP INSTRUCTIONS

Install Magnetic Connector



a. Pull off end caps from Silverstep.



b. Push connector piece until it locks in position.



c. Connect another Silverstep onto it.

Complete Connection



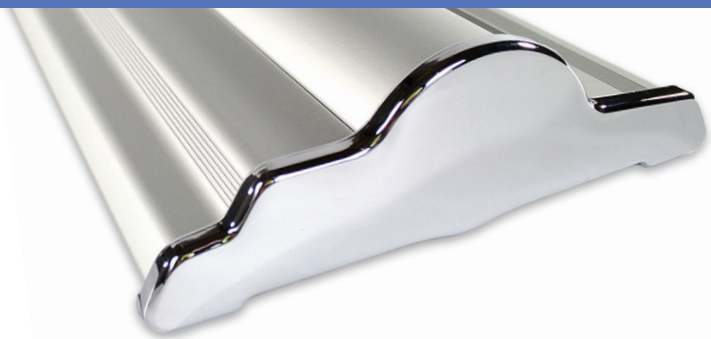
SILVERSTEP® TABLETOP 48"

RETRACTABLE BANNER STANDS

PRODUCT CODE: SSTT48



On frame On graphic



PRODUCT DESCRIPTION

Durable and uniquely designed, this aluminum stand is the perfect combination of versatility, appeal, and affordability.

DISPLAY DIMENSION	49.5" W x 9.5" D x 3" H
GRAPHIC DIMENSIONS	48" W x 69" to 92" H

GRAPHIC MATERIAL

Super Flat Vinyl or Fabric

GRAPHIC FINISHING

5" Bleed at the bottom

DISPLAY CONSTRUCTION

Sturdy Aluminum Construction

SHIPPING WEIGHTS & DIMENSIONS

SINGLE BOX - 1 Unit

Shipping Weight	21 lbs (stand only) 22 lbs (frame and graphic)
Shipping Dimensions	53" H x 13" W x 6" D

MASTER BOX - 4 Units

Shipping Weight	89 lbs (stand only) 90 lbs (frame and graphic)
Shipping Dimensions	53" H x 27" W x 12" D

LARGE QUANTITY FREIGHT

Master Box - Freight Shipping	9 boxes per 48" L x 40" W x 65" H skids
Master Box - Freight Weight	534 lbs (frame only) 540 lbs (frame & graphic)

GRAPHIC TURN AROUND TIME

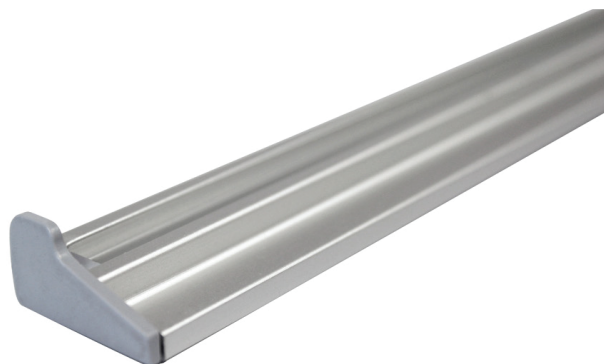
2 to 3 business days after proof approval

AVAILABLE ACCESSORIES

Silver Clamp Light (35 Watts)	Silver Clamp Light LED
Silver Light (50 Watts)	Silverstep Magnetic Connector

AVAILABILITY

CA and PA



Silver Hook & Loop Bar
(Optional for Fabric)



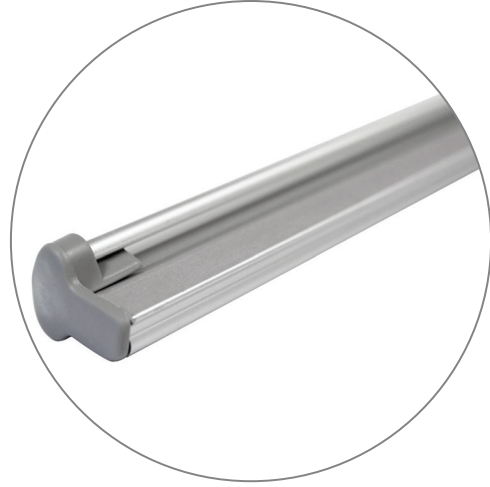
Silverstep Magnetic Connector
(Optional)



PARTS LIST



Qty 1 - Silverstep Stand



Qty 1 - Clamp Bar



Qty 2 - Telescopic Support Poles



Qty 1 - Silver Travel Bag

SILVERSTEP® TABLETOP 48"

RETRACTABLE BANNER STANDS

PRODUCT CODE: SSTT48

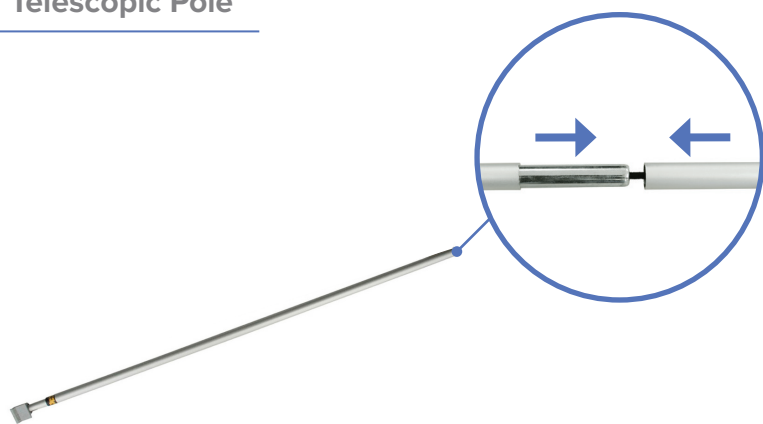
SET UP INSTRUCTIONS

Prepare Banner Stand

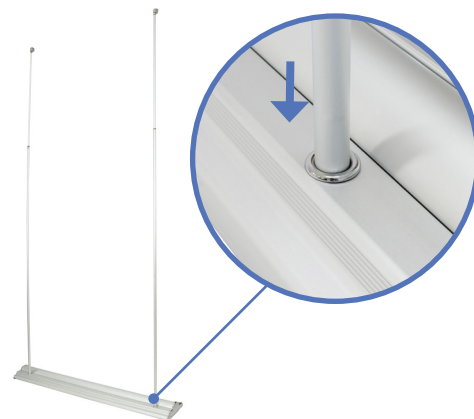


a. Remove Silverstep Stand out of bag.

Install Telescopic Pole



a. Assemble telescopic poles.



b. Insert telescopic poles into hole of the base stand.

Pull Up Banner



a. Pull banner out of base.



b. Attach telescopic poles to the clamp bar.
Adjust pole to desired height.



c. Complete stand.

SET UP INSTRUCTIONS

Install Magnetic Connector



a. Pull off end caps from Silverstep.



b. Push connector piece until it locks in position.



c. Connect another Silverstep onto it.

Complete Connection



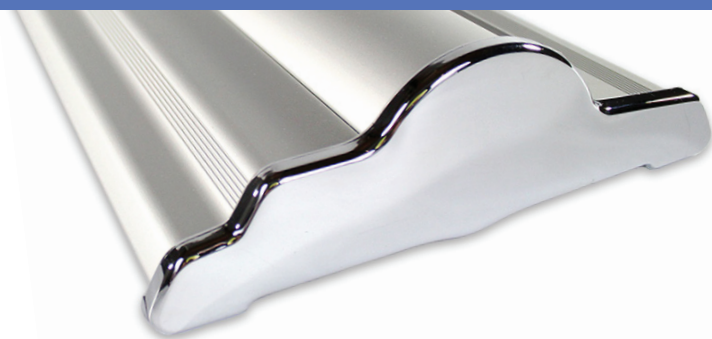
SILVERSTEP® RETRACTABLE BANNER STAND 60"

RETRACTABLE BANNER STANDS

PRODUCT CODE: SS60



On frame On graphic



PRODUCT DESCRIPTION

Durable and uniquely designed, this aluminum stand is the perfect combination of versatility, appeal, and affordability.

DISPLAY DIMENSION 61.5" W x 9.5" D x 3" H

GRAPHIC DIMENSIONS 60" W x 69" to 92" H

GRAPHIC MATERIAL

Super Flat Vinyl or Fabric

GRAPHIC FINISHING

5" Bleed at the bottom

DISPLAY CONSTRUCTION

Sturdy Aluminum Construction

SHIPPING WEIGHTS & DIMENSIONS

SINGLE BOX - 1 Unit

Shipping Weight 25 lbs (stand only)
26 lbs (frame and graphic)

Shipping Dimensions 67" H x 13" W x 5" D

MASTER BOX - 4 Units

Shipping Weight 111 lbs (stand only)
112 lbs (frame and graphic)

Shipping Dimensions 69" H x 27" W x 13" D

LARGE QUANTITY FREIGHT

Master Box - Freight Shipping 6 boxes per 48" L x 40" W x 69" H skids

Master Box - Freight Weight 333 lbs (frame only)
336 lbs (frame & graphic)

GRAPHIC TURN AROUND TIME

2 to 3 business days after proof approval

AVAILABLE ACCESSORIES

Silver Clamp Light (35 Watts) Silver Clamp Light LED

Silver Light (50 Watts) Silverstep Magnetic Connector

AVAILABILITY CA and PA



Silver Hook & Loop Bar
(Optional for Fabric)

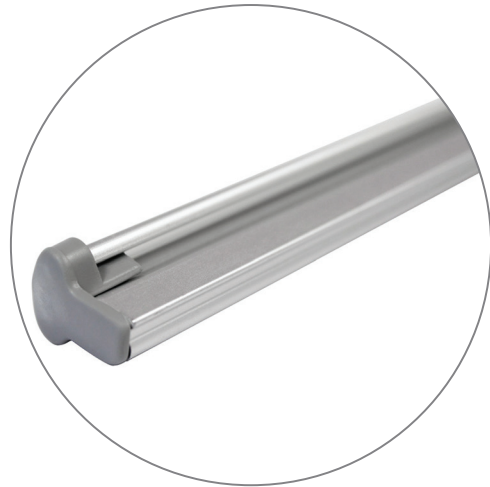


Silverstep Magnetic Connector
(Optional)

PARTS LIST



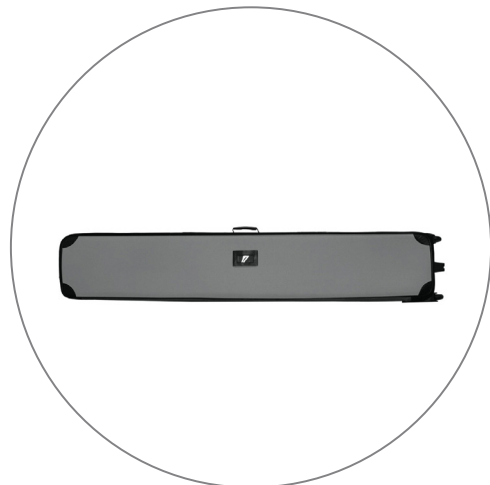
Qty 1 - Silverstep Stand



Qty 1 - Clamp Bar



Qty 2 - Telescopic Support Poles



Qty 1 - Silver Travel Bag

SILVERSTEP® RETRACTABLE BANNER STAND 60"

RETRACTABLE BANNER STANDS

PRODUCT CODE: SS60

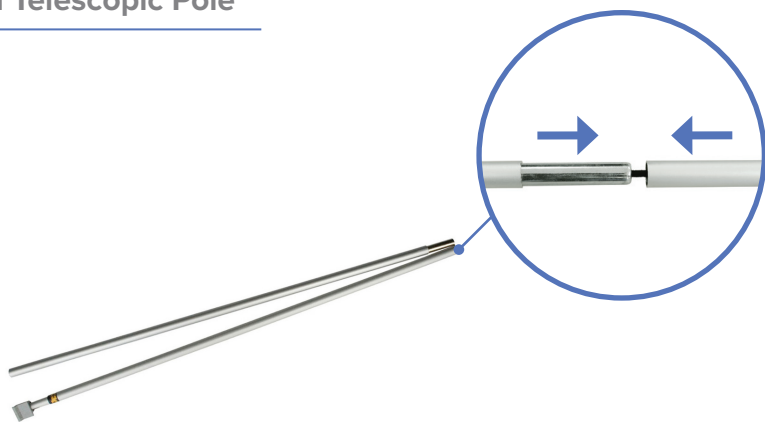
SET UP INSTRUCTIONS

Prepare Banner Stand

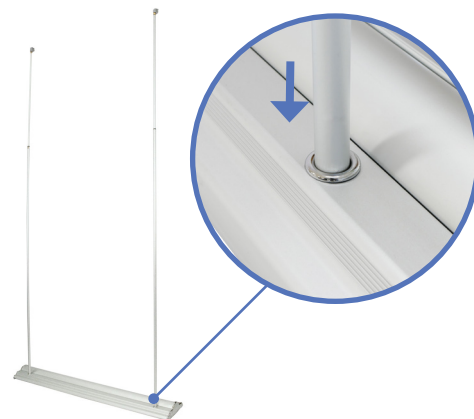


a. Remove Silverstep Stand out of bag.

Install Telescopic Pole



a. Assemble telescopic poles.



b. Insert telescopic poles into hole of the base stand.

Pull Up Banner



a. Pull banner out of base.



b. Attach telescopic poles to the clamp bar. Adjust pole to desired height.



c. Complete stand.

SILVERSTEP® RETRACTABLE BANNER STAND 60"

RETRACTABLE BANNER STANDS

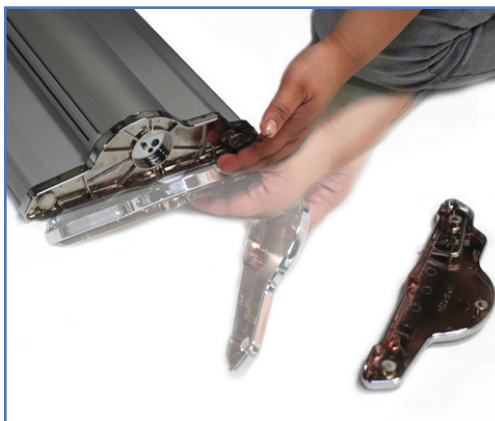
PRODUCT CODE: SS60

SET UP INSTRUCTIONS

Install Magnetic Connector



a. Pull off end caps from Silverstep.



b. Push connector piece until it locks in position.



c. Connect another Silverstep onto it.

Complete Connection



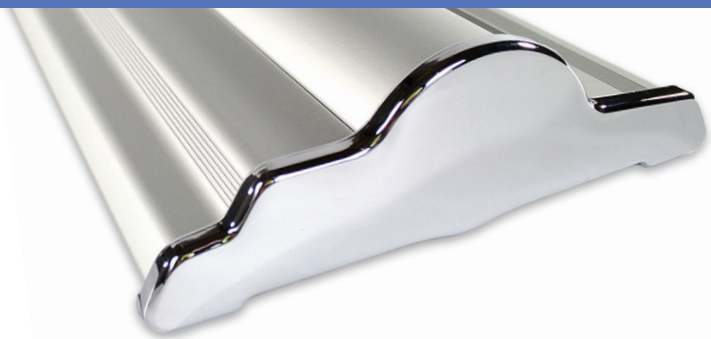
SILVERSTEP® TABLETOP 60"

RETRACTABLE BANNER STANDS

PRODUCT CODE: SSTT60



On frame On graphic



PRODUCT DESCRIPTION

Durable and uniquely designed, this aluminum stand is the perfect combination of versatility, appeal, and affordability.

DISPLAY DIMENSION 61.5" W x 9.5" D x 3" H

GRAPHIC DIMENSIONS 60" W x 69" to 92" H

GRAPHIC MATERIAL

Super Flat Vinyl or Fabric

GRAPHIC FINISHING

5" Bleed at the bottom

DISPLAY CONSTRUCTION

Sturdy Aluminum Construction

SHIPPING WEIGHTS & DIMENSIONS

SINGLE BOX - 1 Unit

Shipping Weight 25 lbs (stand only)
26 lbs (frame and graphic)

Shipping Dimensions 67" H x 13" W x 5" D

MASTER BOX - 4 Units

Shipping Weight 111 lbs (stand only)
112 lbs (frame and graphic)

Shipping Dimensions 69" H x 27" W x 13" D

LARGE QUANTITY FREIGHT

Master Box - Freight Shipping 6 boxes per 48" L x 40" W x 69" H skids

Master Box - Freight Weight 333 lbs (frame only)
336 lbs (frame & graphic)

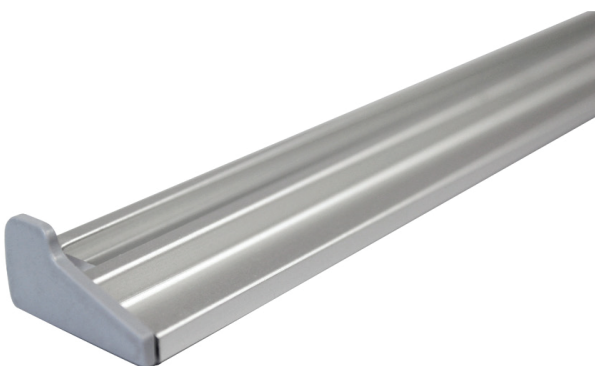
GRAPHIC TURN AROUND TIME

2 to 3 business days after proof approval

AVAILABLE ACCESSORIES

Silver Clamp Light (35 Watts)	Silver Clamp Light LED
Silver Light (50 Watts)	Silverstep Magnetic Connector

AVAILABILITY CA and PA



Silver Hook & Loop Bar
(Optional for Fabric)

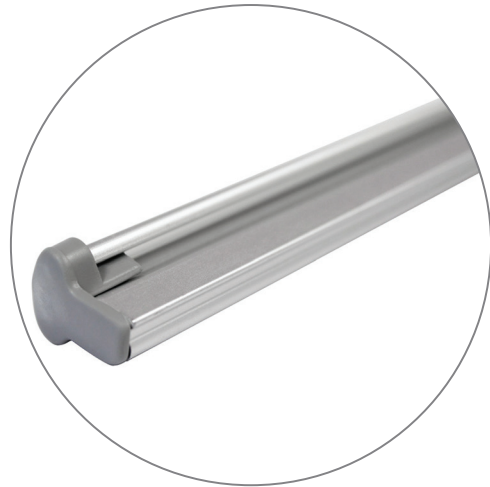


Silverstep Magnetic Connector
(Optional)

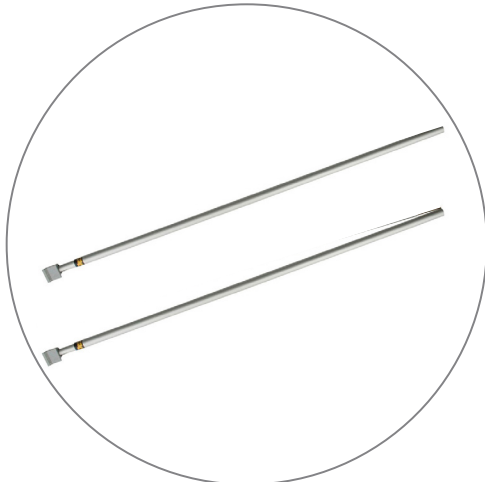
PARTS LIST



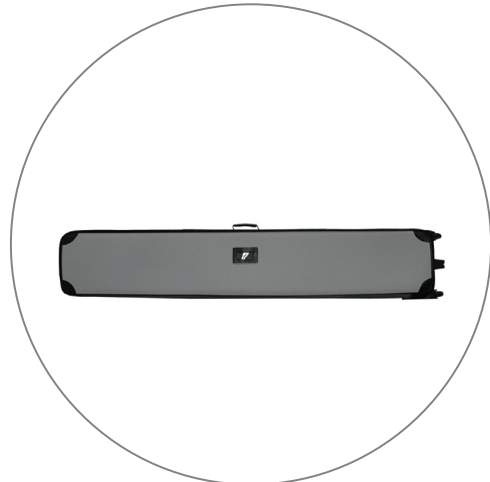
Qty 1 - Silverstep Stand



Qty 1 - Clamp Bar



Qty 2 - Telescopic Support Poles



Qty 1 - Silver Travel Bag

SILVERSTEP® TABLETOP 60"

RETRACTABLE BANNER STANDS

PRODUCT CODE: SSTT60

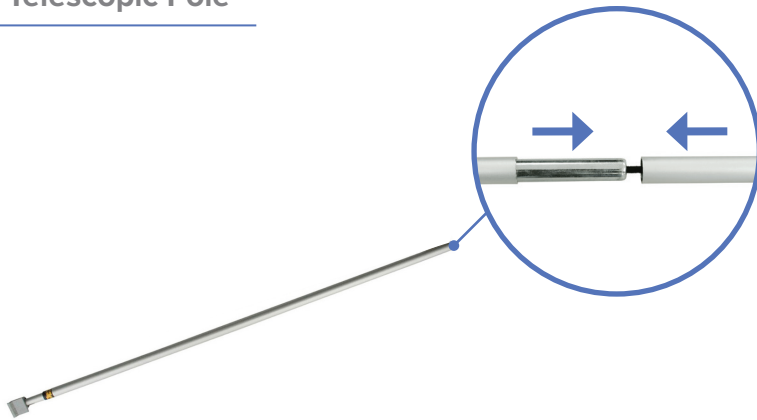
SET UP INSTRUCTIONS

Prepare Banner Stand

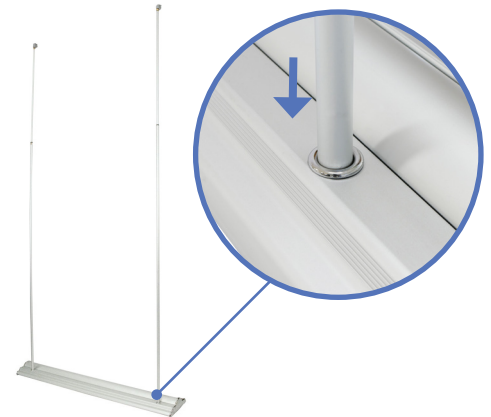


a. Remove Silverstep Stand out of bag.

Install Telescopic Pole



a. Assemble telescopic poles.



b. Insert telescopic poles into hole of the base stand.

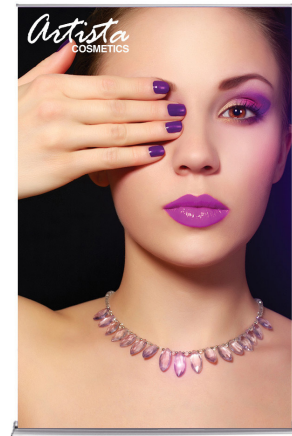
Pull Up Banner



a. Pull banner out of base.



b. Attach telescopic poles to the clamp bar.
Adjust pole to desired height.



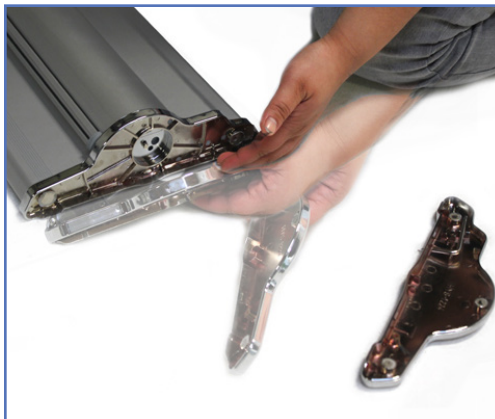
c. Complete stand.

SET UP INSTRUCTIONS

Install Magnetic Connector



a. Pull off end caps from Silverstep.



b. Push connector piece until it locks in position.



c. Connect another Silverstep onto it.

Complete Connection

